



The Role of Enterprise Architecture in Moving to an AIM Environment

Pierre Truter

**Manager ICT Planning
Airservices Australia**

from the ground up





Overview

- **The Concept of Enterprise Architecture**
- **Airservices Approach to AIM Planning**
- **Airservices Australia Enterprise Architecture Online Repository**
- **Summary**



Information Management Strategic Framework

Airservices information will be managed so that it is:

- Captured once and used many times and there is a single authoritative source for all high-value operational and business critical information.
- Created, organised, used and protected in accordance with its value to the business and stakeholders.
- Fit for purpose and fit for the future, accessible and flexible to support forecasting, planning and decision-making across the business.
- Managed according to its lifecycle and independent of technology systems.
- Compliant with our legislative and regulatory responsibilities – transitioning from paper-based to electronic records.
- Leveraged, where appropriate, to create intellectual property as a commercial product for aviation industries and other customers.



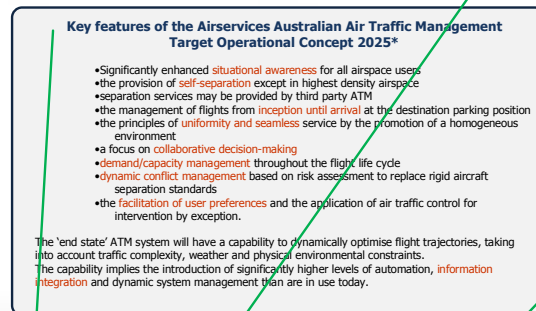
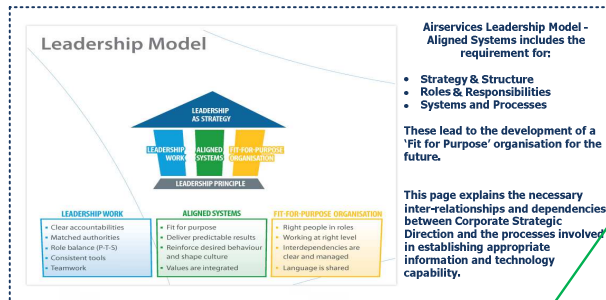
1. Determine the current systems baseline.
2. Interviews to determine users perception and Information Management issues.
3. The result was:
 - Information Management Capability Framework.
 - Information Management Architecture Framework.
 - Information Management GAP analysis.

Information Management Architecture Framework

inside | AIRSERVICES AUSTRALIA



Airservices Australia – Enterprise Capability Development



Business Strategy

What will our business look like in the future? How do we want to position our services into the future?

Enterprise Business Processes

How does the whole organisation contribute towards achieving the strategy? What changes do we need to make in relation to the way we do business now?

Information Capability

What are the key questions we need to answer to understand and manage our business, inform our customers & provide value to our customers? How will we monitor progress & success?

Technology

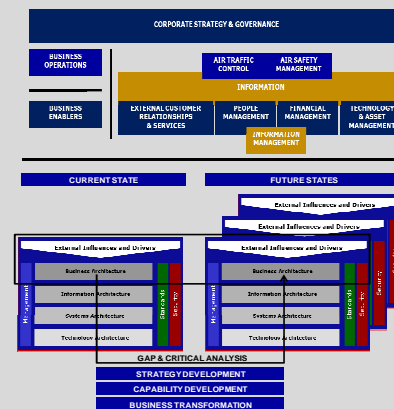
How can technology help to streamline & manage the business more efficiently? How can technology contribute to improving the ability to deliver services and report performance to customers and external stakeholders?

Enterprise Business Architecture

Business Architecture will provide an enterprise view of Airservices current state business [initially at the high level] based on available information, stakeholder inputs, observational and investigative research.

This view will clearly demonstrate enterprise business pathways and processes, as well as the inter-relationships and inter-dependencies that exist between internal and external stakeholders. Such a view does not exist of Airservices business, at this time.

Future state descriptions and views, will depict Airservices future strategies, capability development and business transformation. These will be derived from strategic intent expressed in the Airservices Corporate Plan and ICAO Operational Concept 2025, organisational drivers, and through identification of gaps and critical analyses.



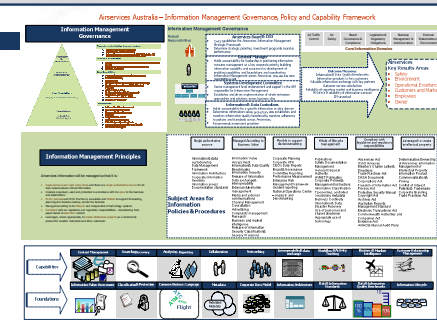
WHO, WHAT, WHY, HOW, WHEN, WHERE ?

Enterprise Information Management and Architecture

Information Management provides the necessary enterprise governance, policies, standards and tools to effectively manage Airservices information resources, so that they can support the achievement of Airservices current and future business objectives.

Information Architecture describes the structural design of shared information environments. The art and science of organizing and labelling information contained in databases, web sites, intranets, online communities and other software to support search, discovery and use of information artefacts.

The development of Information Management capability is essential to make sure that the Airservices information is managed as a key strategic resource. This is essential to achieve the strategic intent expressed in Airservices Corporate Plan and the ICAO Operational Concept 2025 can readily be delivered.

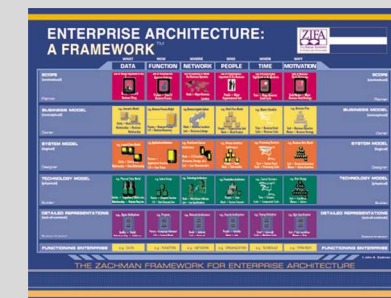


Enterprise IT Architecture

Enterprise Technology Architecture provides a detailed representation of how enterprise business processes are linked into the enabling operational and business systems. It will also provide a graphic representation of the links and interfaces between the enterprise systems and the technology layer.

Enterprise IT Architecture provides the roadmap for the delivery of Airservices IT Strategy. Neither of these vital components exist at present.

Enterprise IT Architecture is essential to ensure that design and acquisition of new technology solutions is undertaken with a whole enterprise view. The enterprise system layer promotes effective system integration, interoperability and flexibility to meet both current and future business needs.

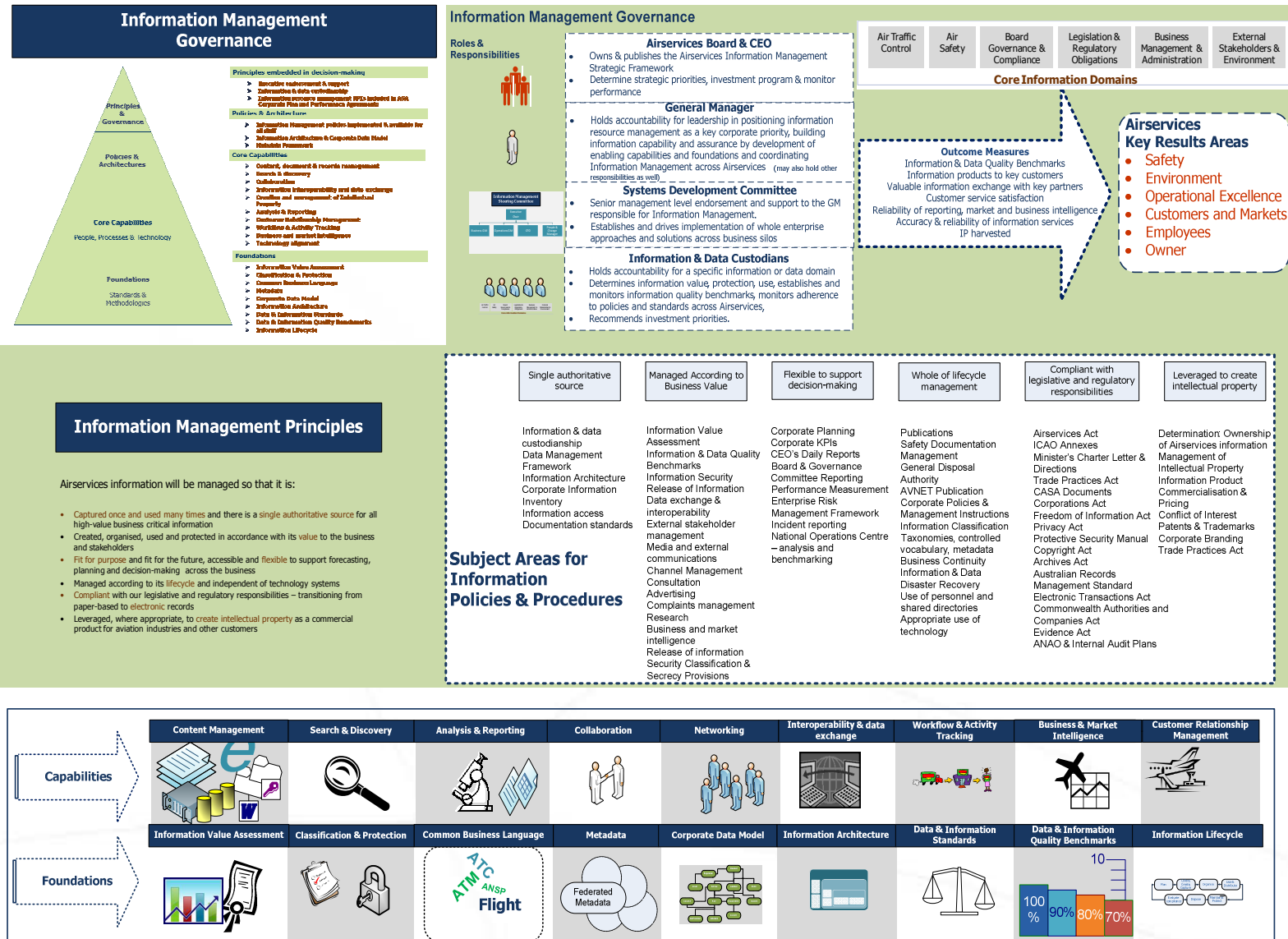


Information Management Capability Framework

airside | AIRSERVICES AUSTRALIA



Airservices Australia – Information Management Governance, Policy and Capability Framework



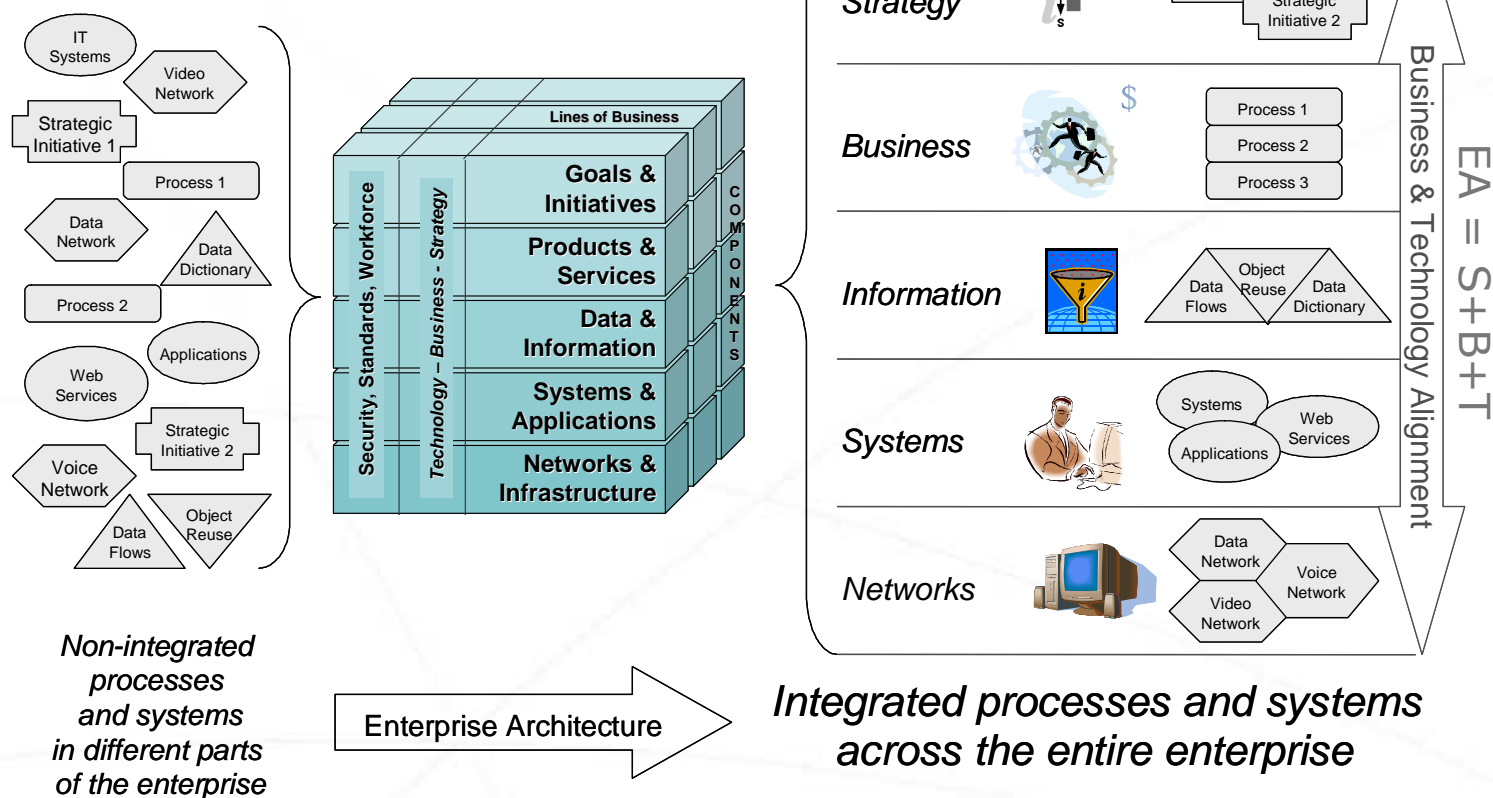
The Concept of Enterprise Architecture

airspace | airside | AIRSERVICES AUSTRALIA



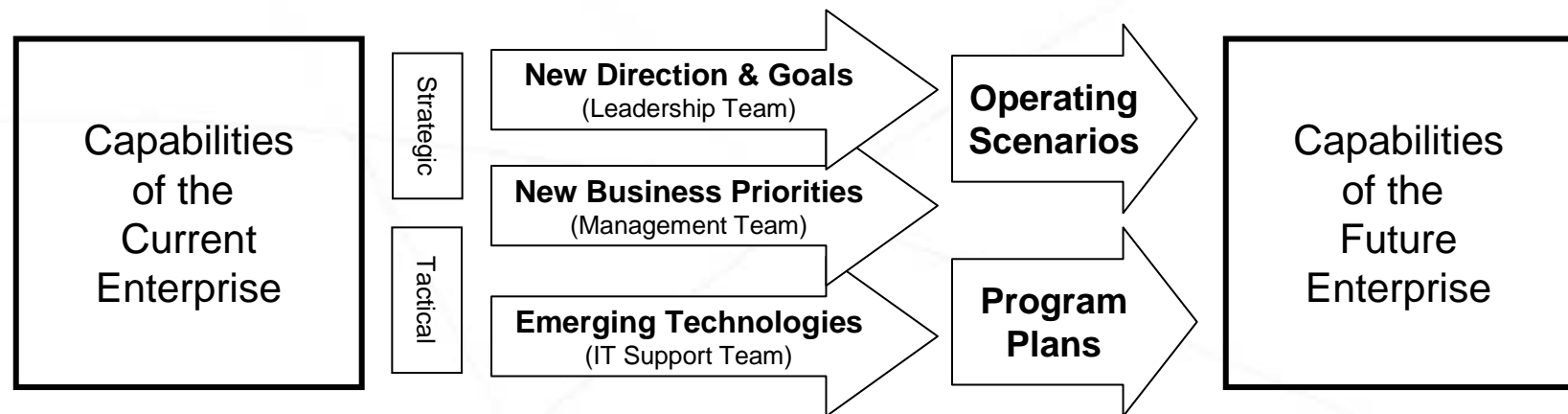
Enterprise Architecture: The analysis and documentation of an enterprise in its current and future states from a strategy, business, and technology perspective. **EA = S + B + T**

An Introduction to Enterprise Architecture © 2005





- EA documents both current & future views of the enterprise
- Changes in an architecture come from 3 levels of input:
 - Executive input on strategic direction and priority
 - Business Manager input on process changes
 - Technology Manager input on supporting IT changes





EA activities are two-fold: a **management program** and a **documentation method**, which together improve performance through the integration of strategic, business, and technology planning and decision-making.

- As a **management program**, EA provides:
 - Resource Alignment: Resource planning and standards determination
 - Standardized Policy: Resource governance and implementation
 - Decision Support: Financial control and configuration management
 - Resource Oversight: Lifecycle approach to development and management
- As a **documentation method**, EA provides:
 - EA Approach: A modeling framework & implementation methodology
 - Current Architecture: Views of as-is strategies, processes, resources
 - Future Architecture: Views of to-be strategies, processes, resources
 - EA Management Plan: To move from the current to the future EA

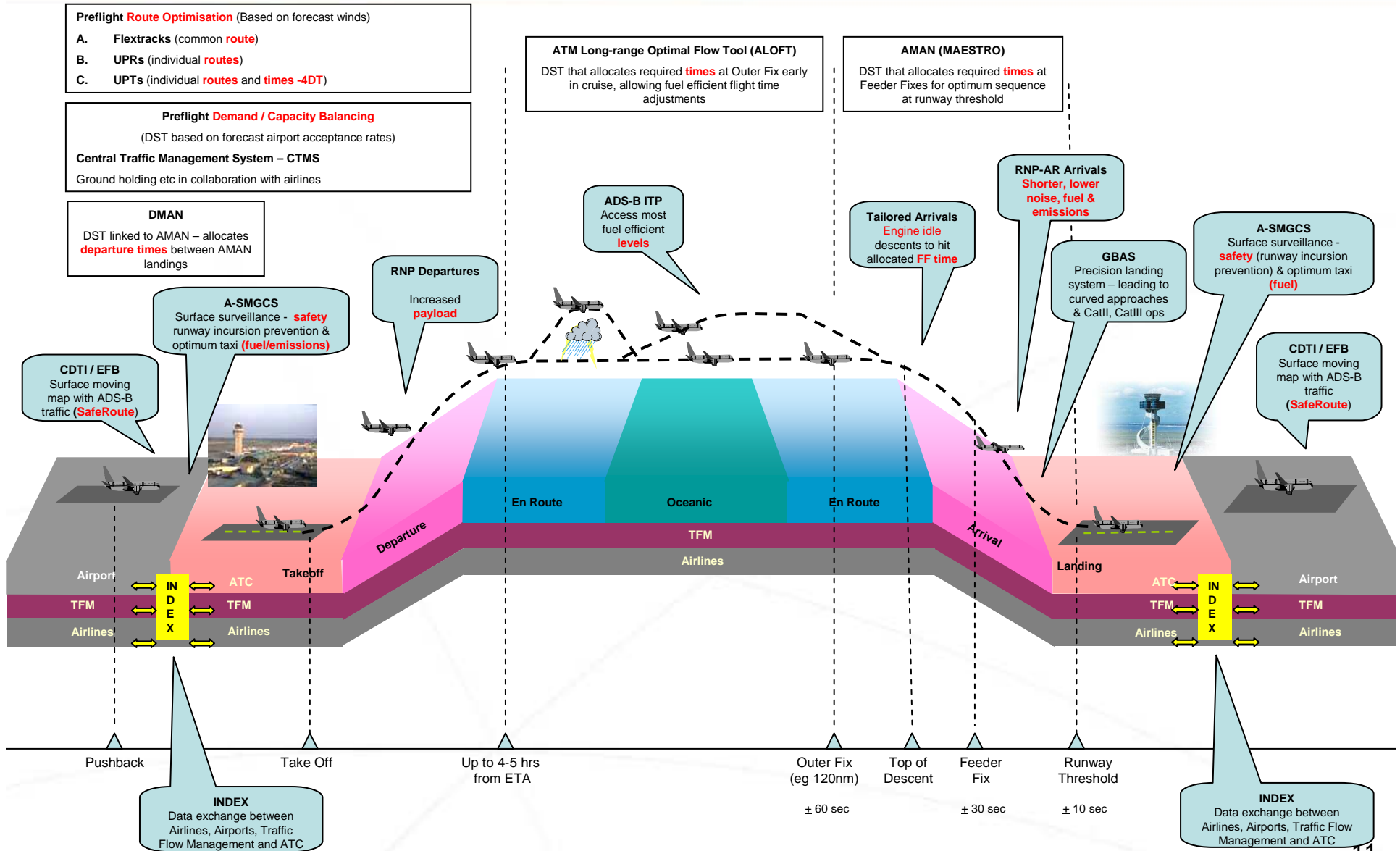


The Enterprise Architecture outcomes help to:

- Achieve strategic goals that depend on IT resources.
- Improve business performance by maximizing IT efficiency.
- Support the desire of executives and managers to have strategic priorities/business requirements drive IT solutions.
- Link multiple IT networks, systems, applications, services, and databases across the entire enterprise.
- Share information between lines of business.
- Reduce duplicative IT resources across the enterprise.
- Maximize the effective use of limited budgets.

AIM Building Blocks

airspace | airside | AIRSERVICES AUSTRALIA

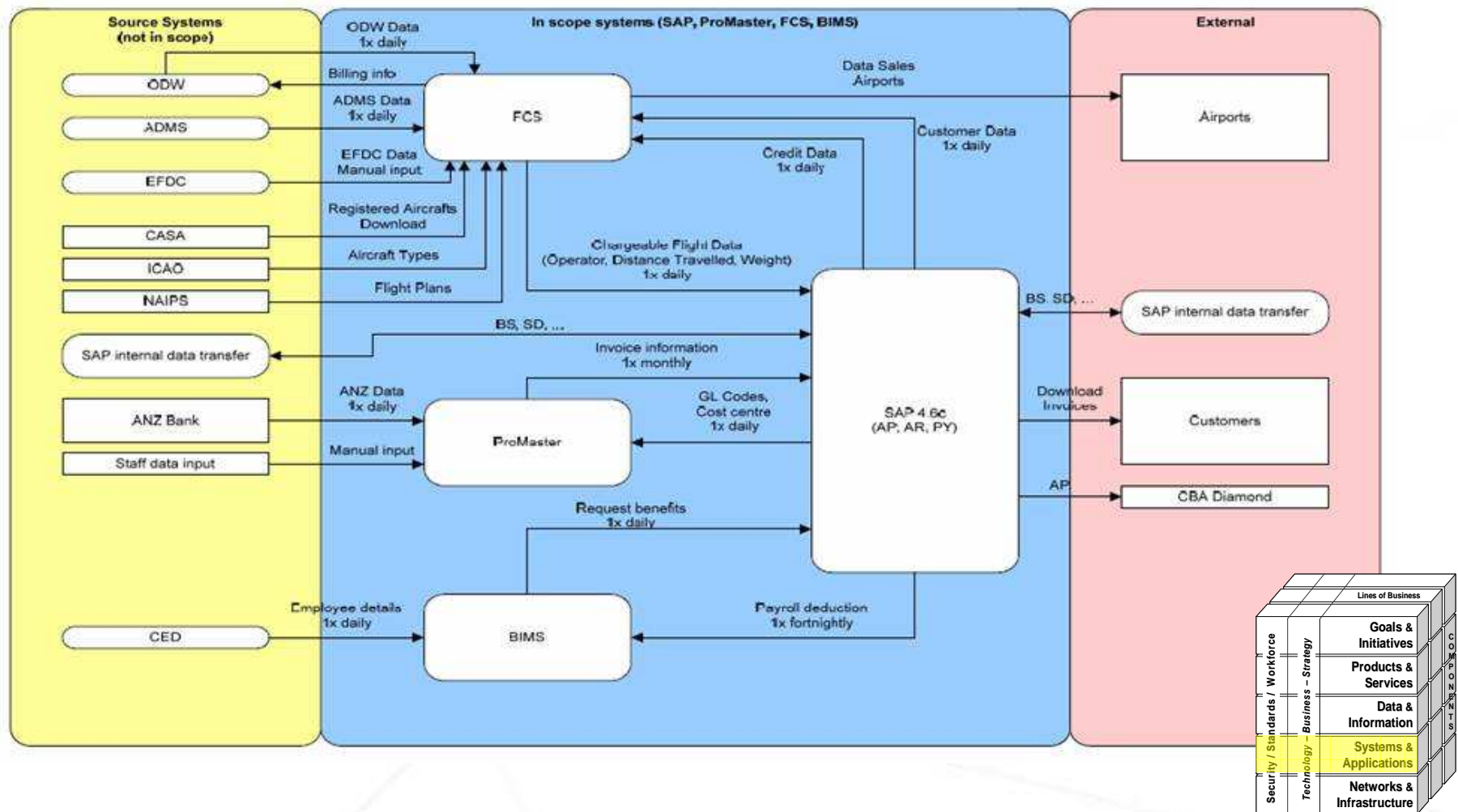




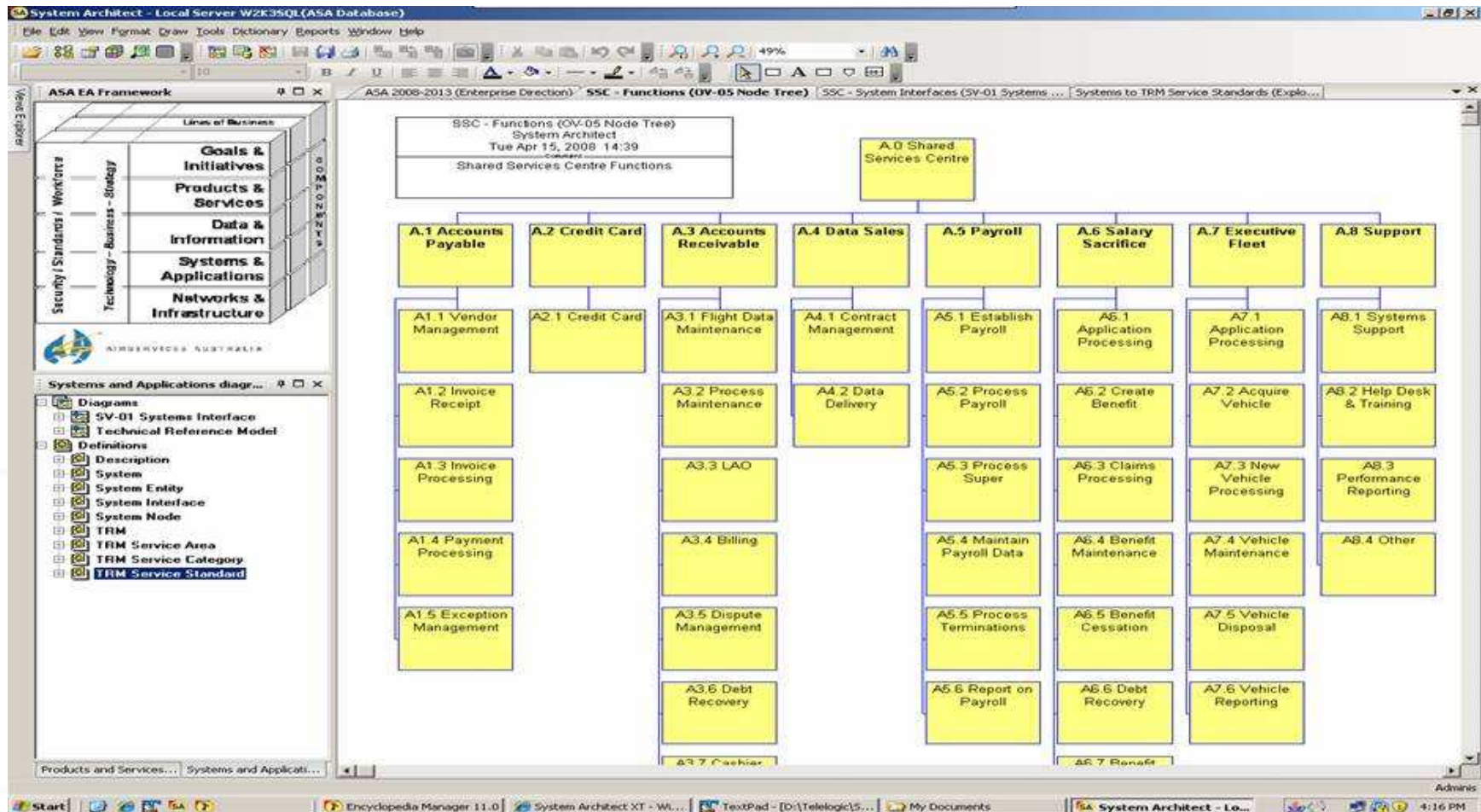
Airservices Australia Enterprise Architecture Online Repository



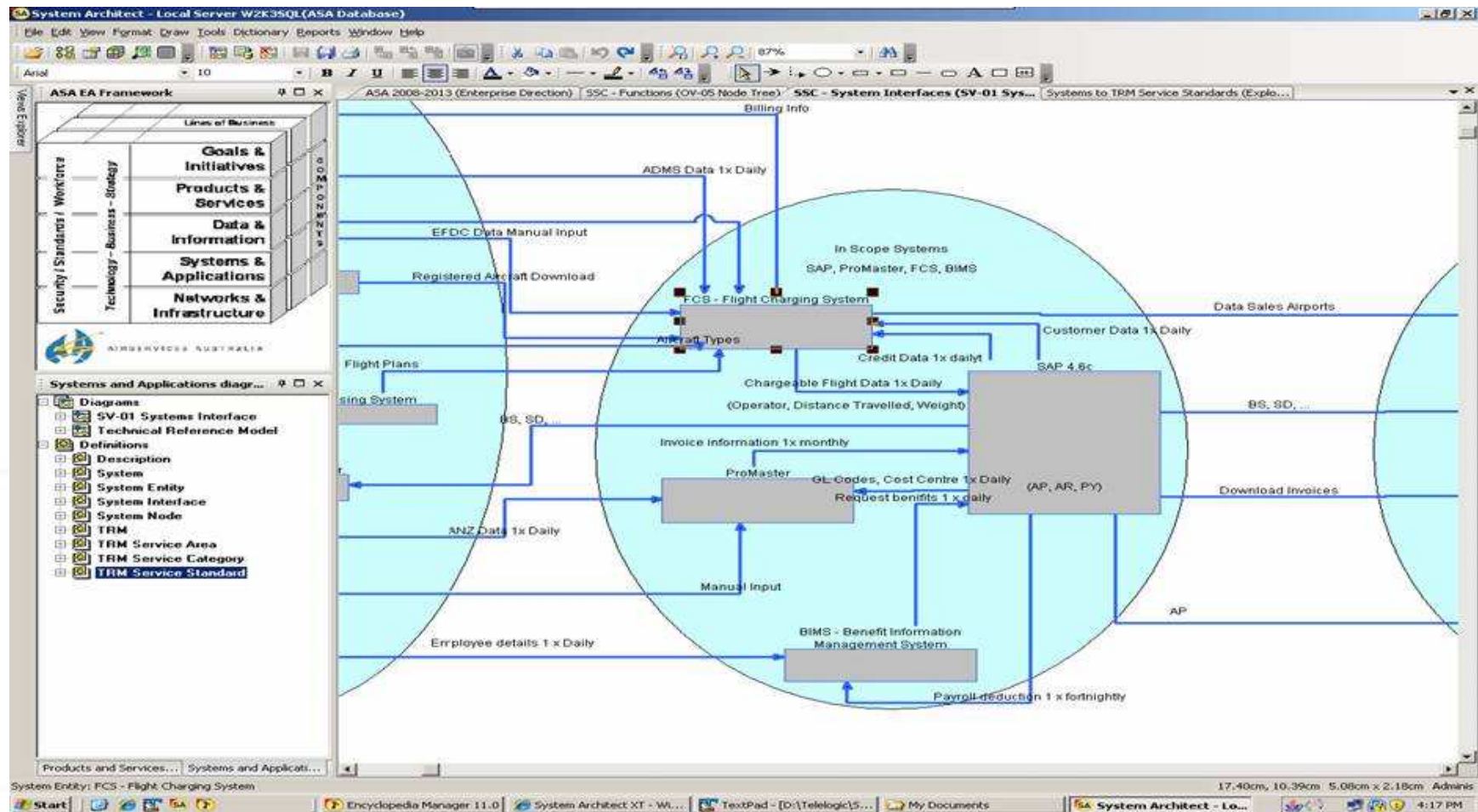
Example EA Shared Services Current Systems Model



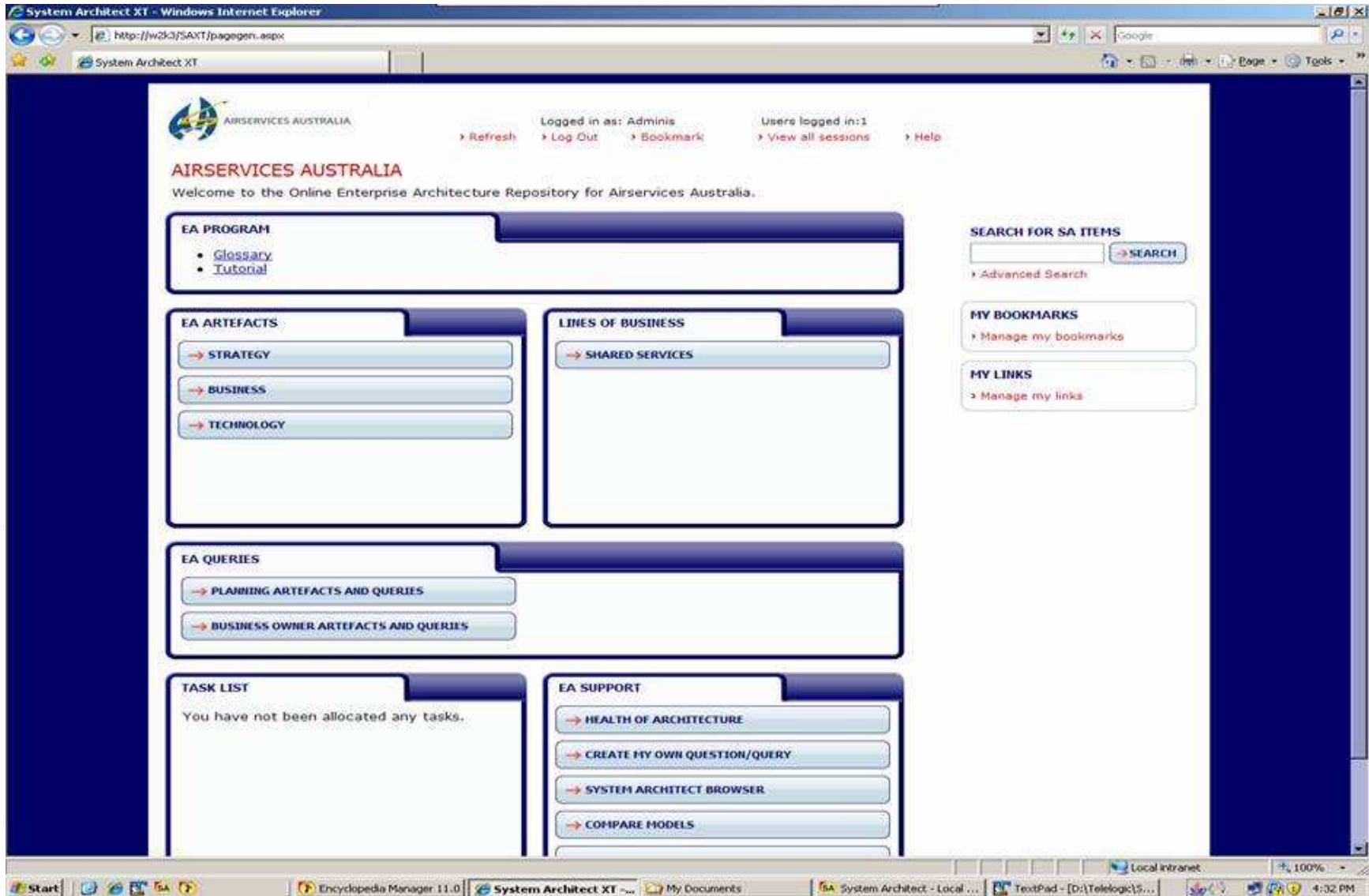
Shared Services - Business Activities



Shared Services - Systems Interfaces



Enterprise Architecture Website Home Page



The screenshot shows the 'System Architect XT' website in a Windows Internet Explorer browser window. The address bar displays 'http://w2k3/SAXT/pagegen.aspx'. The page features a dark blue header with the AIRSERVICES AUSTRALIA logo and navigation links: Refresh, Log Out, Bookmark, View all sessions, and Help. The main content area is divided into several sections:

- EA PROGRAM**: Includes links to Glossary and Tutorial.
- EA ARTEFACTS**: Includes links to STRATEGY, BUSINESS, and TECHNOLOGY.
- EA QUERIES**: Includes links to PLANNING ARTEFACTS AND QUERIES and BUSINESS OWNER ARTEFACTS AND QUERIES.
- TASK LIST**: Displays the message 'You have not been allocated any tasks.'
- EA SUPPORT**: Includes links to HEALTH OF ARCHITECTURE, CREATE MY OWN QUESTION/QUERY, SYSTEM ARCHITECT BROWSER, and COMPARE MODELS.
- SEARCH FOR SA ITEMS**: Includes a search box, a SEARCH button, and a link to Advanced Search.
- MY BOOKMARKS**: Includes a link to Manage my bookmarks.
- MY LINKS**: Includes a link to Manage my links.

The Windows taskbar at the bottom shows the Start button, several application icons, and the system clock displaying 4:02 PM on 4/10/2008.



Thank You

